



# SE215M

## Sound Isolating™ Earphones

The Shure sound isolating earphones, SE215M, use guide.  
Version: 2.1 (2024-I)

---

# Table of Contents

<b>SE215M Sound Isolating™ Earphones</b>	<b>3</b>	<b>Choosing a Sleeve</b>	<b>5</b>
<b>General Description</b>	<b>3</b>	<b>Using the Remote</b>	<b>6</b>
<b>Wearing the Earphones</b>	<b>3</b>	<b>Maintenance and Cleaning</b>	<b>6</b>
<b>Detachable Cable</b>	<b>3</b>	Cleaning the Earphone Nozzle	6
<b>Inserting the Earphones</b>	<b>4</b>	<b>Specifications</b>	<b>7</b>
<b>Changing Sleeves</b>	<b>4</b>	<b>Accessories</b>	<b>7</b>
<b>Removing the Earphones</b>	<b>5</b>	<b>Certifications</b>	<b>8</b>

---

# SE215M Sound Isolating™ Earphones

---

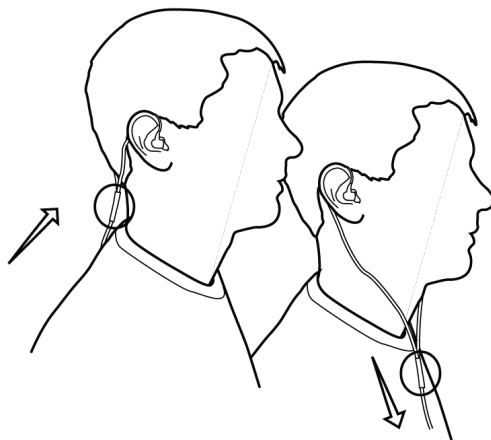
## General Description

Shure Sound Isolating™ Earphones, deliver a detailed soundstage free from outside noise. The powerful and stylish Shure SE earphones come with a detachable cable, adapters, a durable carrying case, and interchangeable Sound Isolating sleeves for a comfortable and personalized fit.

---

## Wearing the Earphones

The following are some suggested ways of wearing the earphones.



Wear the cable over the ear and secure it behind the head to help keep the earphones in place during physical activity.

Tighten the cable and take up slack by raising the cable cinch.

---

## Detachable Cable

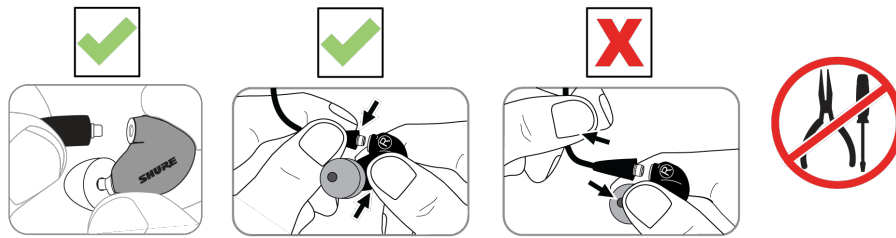
You may need to detach the cable from the earphones to attach optional components or to replace the cable if it becomes damaged. To prevent accidental separation, the connector has a snug fit. Take special care to prevent damage to the earphone and connector.

- Do not use pliers or other tools.
- Grasp the connector and the earphone as close as possible to where they join.
- Pull straight apart—do not twist. Cable is a snap fit, not threaded.

*Note: If you pull at an angle, the connector will not detach.*

- Do not pull on the cable or put any pressure on the earphone nozzle.

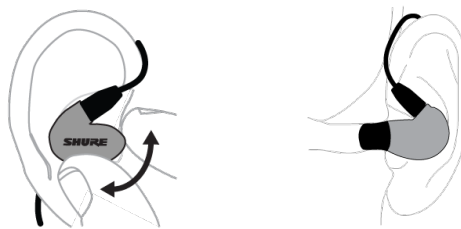
- Listen for a click when connecting.
- When reattaching the cable, match the "L" and "R" markings. For clear cables and earphones, match the color dots (Red=Right, Blue=Left).



Audible click when properly connected

## Inserting the Earphones

Insert the earphones so they form a tight seal. The fit of the earphone can greatly affect sound quality.

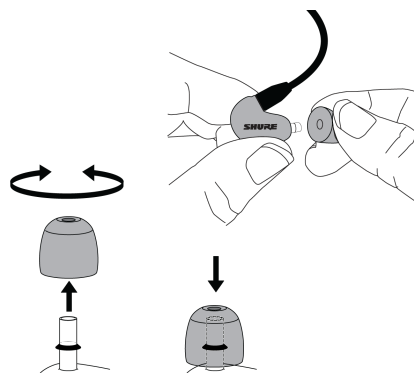


**Important:** If there seems to be a lack of low frequency response (bass), this means that the earphone sleeve is not forming a tight seal. Gently push the earphone deeper into the ear canal or try a different sleeve.

**Warning:** Do not push the earphone sleeve beyond the ear canal opening.

## Changing Sleeves

- Twist and pull to remove the sleeve from the nozzle.
- Slide on a new sleeve so that it completely covers the barb and the nozzle.



**Caution:** If the barb or any of the nozzle is exposed, the sleeve is not properly installed. Replace sleeves if they do not tightly grip the nozzle. To ensure proper fit and performance, use only sleeves supplied by Shure (unless using custom molded sleeves).

## Removing the Earphones



Grasp the body of earphone and gently twist to remove.



**Note:** Do not pull on cable to remove earphone.

## Choosing a Sleeve

Select an earphone sleeve that provides the best fit and sound isolation. It should be easy to insert, fit comfortably, and easy to remove.

	<p><b>Soft Flex Sleeves:</b> In small, medium, and large sizes. Made from pliable rubber.</p>
	<p><b>Soft Foam Sleeves:</b> Compress the foam sleeve between your fingers and insert into the ear canal. Hold in place for about ten seconds while the foam expands.</p>



**Triple-Flange Sleeves:** If desired, use scissors to trim the stem on the sleeve.

## Using the Remote

Use the remote to control compatible media phone players.

- **Answer/End Call:** Click the center button once.
- When answering calls speak in a normal manner.
- Answer/end calls on most phones by pressing the center button once.

Please read your mobile device's user guide for more information on how to use the answer/end button, check for additional features, or to troubleshoot usage problems.

**NOTE:** On some phones it might be necessary to adjust the volume when switching from phone call to music.

For more information about compatible models go to: [www.shure.com](http://www.shure.com)

## Maintenance and Cleaning

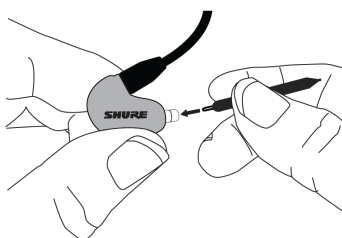
Careful maintenance ensures a tight seal between the sleeve and nozzle, improving sound quality and product safety.

- Keep the earphones and sleeves as clean and dry as possible.
- To clean sleeves, remove them from earphones, gently rinse in warm water and air dry. Foam sleeves require a longer drying time. Inspect for damage and replace if necessary. Ear sleeves must be completely dry before reusing.
- Wipe the earphones and sleeves with mild antiseptic to avoid infections. Do not use alcohol-based disinfectants.
- Do not expose earphones to extreme temperatures.
- Replace sleeves if they do not fit properly.
- Do not attempt to modify this product. Doing so will void the warranty and could result in personal injury and/or product failure.

## Cleaning the Earphone Nozzle

If you notice a change in sound quality, remove the sleeve and check the nozzle of your earphone. If nozzle is blocked, clear obstruction by using wire loop end of cleaning tool.

If no obstruction is found or if sound quality does not improve, replace the sleeve with a new sleeve.



Cleaning Tool

**Caution:** When cleaning, do not force any object through the earphone nozzle! This will damage the earphone sound filter.

**Warning:** The cleaning tool is only to be used to clean the earphones. Any other use, such as using the tool to clean ears or foam sleeve, could result in injury.

The cable connectors to the earphones may collect debris or other deposits that can affect audio quality. If this happens, disconnect the cables and clean them using a dry cotton swab.

# Specifications

## SE215 Earphone

### Transducer Type

Single High-Definition MicroDriver

### Sensitivity

*at 1 kHz*

107 dB SPL/mW

### Impedance

*at 1 kHz*

17  $\Omega$

### Noise Attenuation

up to 37 dB

### Frequency Range

<b>SE215 Special Edition</b>	21 Hz–17.5 kHz
<b>SE215</b>	22 Hz–17.5 kHz

### Maximum Audio Input Power

100 mW

### Charging Requirements

The radio equipment requires the power delivered by the charger to be between: A minimum of 0.5 Watts, and a maximum of 2.5 Watts in order to achieve the maximum charging speed

### Input Connector

MMCX connectors

### Net Weight

20.8 g (.7 oz.)

### Operating Temperature

-18°C to 57°C (0°F to 135°F)

### Storage Temperature

-29°C to 74°C (-20°F to 165°F)

---

# Accessories

For information about earphone accessories and other Shure products visit:

<http://www.shure.com/americas/products/accessories/earphones>

Furnished accessories subject to change.

---

# Certifications

This product meets the Essential Requirements of all relevant European directives and is eligible for CE marking.

The CE Declaration of Conformity can be obtained from: [www.shure.com/europe/compliance](http://www.shure.com/europe/compliance)

Authorized European representative:

Shure Europe GmbH

Global Compliance

Jakob-Dieffenbacher-Str. 12

75031 Eppingen, Germany

Phone: +49-7262-92 49 0

Email: [info@shure.de](mailto:info@shure.de)

[www.shure.com](http://www.shure.com)