

THE MOST POWERFUL FAMILY IN PORTABLE SOUND



THE BEST-SELLING PRO AUDIO SPEAKERS IN THE WORLD.

The ZLX series brings class-leading sound quality, power, and overall performance and reliability to a price point that positions them as the best-value lightweight pro audio speakers available today. That's why they've become the go-to choice across the globe.

Available in 12" and 15" powered and passive versions, ZLX makes it easier than ever to own and experience premium pro audio. Its combination of streamlined industrial design, compact size, user-friendly operation and portability, and plentiful power have made it the go-to choice for DJ/musician applications. Perfect for practice spaces and small clubs, and great for basic installations and portable multi-purpose sound.



DOES MORE. WEIGHS LESS.

The ELX200 series offers professional Electro-Voice audio quality, precision control, and robust, EV-engineered components in an ultra-lightweight package – a truly potent blend of performance and portability.

Get the smooth clarity of the EV sound in the right size to suit your needs: with 10-inch, 12-inch, and 15-inch two-way models, and 12-inch and 18-inch subwoofers available in both powered and passive versions, ELX200 is a flexible, feature-rich choice for DJs, mobile entertainers, bands, and musicians.



MAXIMUM SONIC IMPACT. MINIMUM EFFORT.

With Electro-Voice engineering and innovation working together for maximum sonic impact, the EKX series makes it easy to optimize the power of your performance, whatever the application, thanks to a wide range of EV-exclusive, best-in-class features.

EKX combines renowned Electro-Voice sound quality and reliability with the latest technology — all in a compact package suitable for a wide range of sound reinforcement scenarios, including musicians, DJs and small-to-medium live, club, and installed sound applications. The EKX series is equipped with professional features not usually found at its price point, making it an incredible value.



THE FULLY LOADED FLAGSHIP.

Positioned at the highest level of the most powerful family in portable sound, ETX powered loudspeakers feature a range of technologies adapted from Electro-Voice concert and touring systems, setting them apart from the competition to be the highest-specification products in their class.

The ETX series combines intelligent FIR-Drive technology with innovative industrial design to deliver stunning performance and unbeatable versatility in the most demanding applications. EV-engineered components ensure superior sound quality and the utmost reliability. Building upon the legendary heritage of EV-engineering, ETX is designed to be the most advanced professional-grade portable loudspeakers available today.



ZLX

THE BEST-SELLING PRO AUDIO SPEAKERS IN THE WORLD.

ELECTROVOICE.COM/ZLX



ZLX Powered Loudspeakers

The two powered ZLX models stand apart with the highest level of performance and the most complete and innovative package of features in their class:

- **EV-engineered components** matched with a 1000-W Class-D amplifier for best-in-class sound.
- **Single-knob QuickSmart DSP control with LCD display** and application and location presets — optimize performance to suit your style and space.
- **Input level meters and independent amplifier control** — ensure optimal gain structure in seconds.
- **Lightweight, super-durable composite construction** with unique hi/lo grip design for effortless pole mounting and portability.
- **Patented split-baffle design** for superior driver time alignment, enhancing audio impact and intelligibility.
- **Stunning enclosure design** — looks as good as it sounds.

In the case of the ZLX's uncluttered control panel, less really does mean more. Though the multiple dials and switches on other powered loudspeakers may suggest more functionality, ZLX's powerful QuickSmart DSP engine is accessed by a clean single-knob design with LCD display, and offers the most precise control and configuration available at its price point. Use the presets to optimize ZLX according to your application (music, live, speech, club) and your location (pole mount, monitor, install) and hear the difference in seconds. ZLX: smarter design, simpler operation, and superior performance to other boxes of a similar size and weight.

Two Bluetooth-equipped models are available for high-resolution music streaming.



**CUSTOM-BUILT
1000 W CLASS-D
AMPLIFIER**

**VISUAL CONTROL
AND MONITORING
WITH PRESETS**



The ZLX-12BT (12-inch, 2-way) and ZLX-15BT (15-inch, 2-way) are both Bluetooth®* equipped for audio streaming.

The BT models combine the superior components, coverage and clarity of the regular ZLX models with the latest Bluetooth technology to deliver the lowest-noise, highest-fidelity music streaming experience in their class — wireless convenience with no compromises in sound quality.





ZLX-12P 12" TWO-WAY POWERED LOUDSPEAKER

The compact, lightweight ZLX-12P was designed to give you power and performance beyond the scope of other small-format loudspeakers, making it a standout choice for smaller-venue sound reinforcement or stage monitoring. Poured for round, no other similarly sized composite box comes close.

1000 W (Class-D); 126 dB peak
SPL; 65 Hz – 18 kHz (-3 dB)

90° x 60° coverage

12" woofer and 1.5" high-frequency
titanium compression driver

34.3 lbs | 15.6 kg

24" x 14" x 14"
610mm x 356mm x 356mm
(H x W x D)

ZLX-12BT -- Bluetooth®* equipped
model available for high-resolution audio
streaming



ZLX-15P 15" TWO-WAY POWERED LOUDSPEAKER

Extend your low-end with this portable powerhouse. Whether used on its own or with a sub, the ZLX-15P provides crisp, clean highs and tight, deep lows for larger spaces — all with enough amplifier headroom to make sure you're heard both loudly and clearly.

1000 W (Class-D); 127 dB peak
SPL; 55 Hz – 18 kHz (-3 dB)

90° x 60° coverage

15" woofer and 1.5" high-frequency
titanium compression driver

38.0 lbs | 17.3 kg

27" x 17" x 15"
685mm x 423mm x 383mm
(H x W x D)

ZLX-15BT -- Bluetooth®* equipped
model available for high-resolution audio
streaming

*Bluetooth® is available in select countries. The Bluetooth® word mark and logos are registered trademarks owned by Bluetooth SIG, Inc. and any use of such marks by Bosch Security Systems, Inc. is under license. Other trademarks and trade names are those of their respective owners.
©2018 Bosch Security Systems, Inc.

ELX200

DOES MORE. WEIGHS LESS.

ELECTROVOICE.COM/ELX200



**LIGHTWEIGHT
DESIGN WITH NO
COMPROMISES**
**REMOTE CONTROL
AND MONITORING
WITH MOBILE APP**

ELX200 Powered Loudspeakers

The next generation of the popular ELX line.

- **Wireless control and monitoring via the new Bluetooth® QuickSmart Mobile app*.** Control your sound while in front of your system. Quickly configure up to six ELX200 loudspeakers simultaneously, and receive immediate notification during critical performance conditions.
- **Perfect for both portable and installed applications.** Next-generation enclosures offer a step up in both styling and build quality. Full-range models feature lightweight, compact composite enclosures with internal reinforcement, designed to minimize resonance and increase rigidity and strength. With the lightest 18-inch wood powered sub on the market, and a stunning 10-inch top / 12-inch sub compact combo available to serve smaller venues, there are options available for every application. Professional-grade hardware includes three M10 threaded suspension points for forged eyebolts, integrated pole-mounts, and our proven three-handle design for easy lifting.
- **Heavyweight performance in a lightweight package.** Though ELX200 is easy to carry, its tough construction and components ensure legendary EV durability and sound quality, night after night. System reliability is verified with extreme endurance testing – far above and beyond industry norms. Super-efficient Class-D power amplifiers deliver distortion-free maximum SPLs utilizing high-sensitivity transducers – all designed and engineered by Electro-Voice.
- **QuickSmart DSP provides best-in-class processing via EV's signature single-knob user interface with LCD.** Easy setup via four presets (Music, Live, Speech, Club), three-band EQ, and master volume control to optimize gain structure.
- **Electro-Voice-patented SST (Signal Synchronized Transducer) waveguide design combines a more compact footprint with enhanced acoustic performance.** The design allows for a larger waveguide, which is placed forward in the enclosure to time-align the woofer and the tweeter, providing exceptionally precise and consistent coverage – all with deeper, tighter bass response.

*Bluetooth® is available in select countries. The Bluetooth® word mark and logo are registered trademarks owned by Bluetooth SIG, Inc. and any use of such marks by Beach Security Systems, Inc. is under license. Other trademarks and trade names are those of their respective owners.

The ELX200 series is the latest member of the Electro-Voice portable loudspeaker family, and the next generation of the popular ELX line. Designed to deliver superior Electro-Voice sound quality and best-in-class features in a super-portable format, the lineup includes 10-inch, 12-inch and 15-inch two-way models as well as 12-inch and 18-inch subwoofers. Powered and passive versions are available.

All aspects of each ELX200 model work together seamlessly to deliver heavyweight performance in a lightweight package. Integrated efficient Class-D power amplifiers provide distortion-free maximum sound pressure levels utilizing high-sensitivity transducers – all designed and engineered by Electro-Voice. System reliability is verified via rigorous endurance testing of the custom internal components, amplifier/DSP module, and enclosures and hardware – all undertaken above and beyond industry norms.

Full-range ELX200 models feature low-profile form factors designed with durable composite enclosures to balance light weight, structural integrity, and ease of use. EV's proven three-handle design allows for easy lifting and pole-mounting for mobile applications; suspension points make fixed installation simple and secure. ELX200 subwoofers pack powerful low-frequency output into a compact footprint, assembled in optimized wood enclosures with a protective polyurea finish.



ELX200

ELECTROVOICE.COM/ELX200



ELX200-10P

10" TWO-WAY POWERED LOUDSPEAKER

1200 W (Class-D); 130 dB peak
SPL; 59 Hz - 18 kHz (-3 dB)

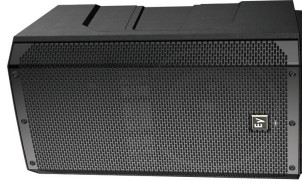
90° x 60° coverage

EVS-10M 10" woofer and 1" high-frequency titanium compression driver

29.9 lbs | 13.5 kg

21" x 13" x 12.6" |

531mm x 330mm x 319mm
(H x W x D)



ELX200-12P

12" TWO-WAY POWERED LOUDSPEAKER

1200 W (Class-D); 130 dB peak
SPL; 57 Hz - 16 kHz (-3 dB)

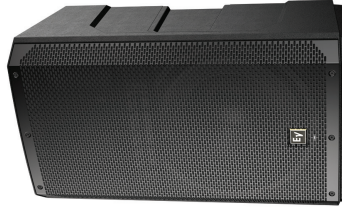
90° x 60° coverage

EVS-12M 12" woofer and 1" high-frequency titanium compression driver

34.4 lbs | 15.6 kg

24.8" x 14.3" x 13.6" |

629mm x 363mm x 344mm
(H x W x D)



ELX200-15P

15" TWO-WAY POWERED LOUDSPEAKER

1200 W (Class-D); 132 dB peak
SPL; 55 Hz - 16 kHz (-3 dB)

90° x 60° coverage

EVS-15M 15" woofer and 1" high-frequency titanium compression driver

41.7 lbs | 18.9 kg

28" x 16.7" x 15.2" |

710mm x 423mm x 384mm
(H x W x D)



ELX200-12SP

12" POWERED SUBWOOFER

1200 W (Class-D); 129 dB peak
SPL; 49 Hz - 135 Hz (-3 dB)

EVS-12L 12" woofer

42.2 lbs | 19.1 kg

16.7" x 17.6" x 18" |

397mm x 445mm x 457mm
(H x W x D)



ELX200-18SP

18" POWERED SUBWOOFER

1200 W (Class-D); 132 dB peak
SPL; 47 Hz - 105 Hz (-3 dB)

EVS-18L 18" woofer

64 lbs | 29 kg

23.7" x 20" x 22.6" |

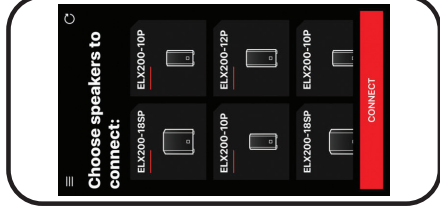
600mm x 507mm x 574mm
(H x W x D)

SUB

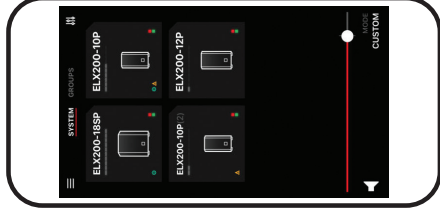
SUB

QUICKSMART MOBILE

REMOTE CONTROL & MONITORING



Choose which loudspeakers to connect and control



Configure your system setup



EV QUICKSMART MOBILE Smartphone App

With EV QuickSmart Mobile, you can now take full control of your system with your phone or tablet.

EV QuickSmart Mobile is an essential tool for new EV loudspeakers. Using BLE connectivity, you can adjust your sound while in front of your PA system. Have peace of mind knowing that you are treating your system well during a performance. Control your sound from where you are, not where the knob is!

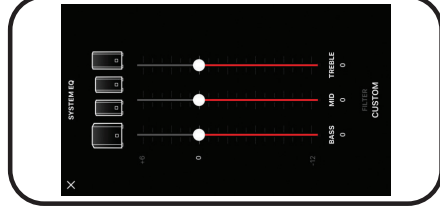
- Simultaneously configure, control, and monitor up to six ELX200 Series portable loudspeakers
- Adjust EQ settings, gain, preset, and crossover parameters
- Signal and limiter status indicators
- Notifications for loss of connection and input clip events
- Make quick adjustments to multiple speakers at once with dynamic component grouping
- Requires Android 5.0+ or iOS 10.0+. Compatible with iPhone®, iPad®, and iPod touch®.

Currently available for ELX200 portable loudspeakers and EVOLVE 50 portable column systems.

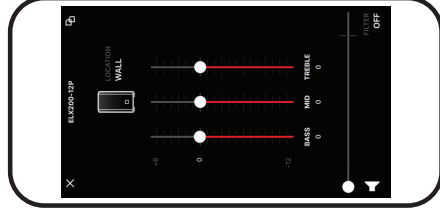
*QuickSmart Mobile is available in select countries. Apple, the Apple logo, iPhone, iPad, and iPod touch are trademarks of Apple Inc., registered in the U.S. and other countries. App Store is a service mark of Apple Inc., registered in the U.S. and other countries. Google Play and the Google Play logo are trademarks of Google Inc.



Organize your system by groups of loudspeakers and subwoofers



Control EQ and volume levels by group or by whole system

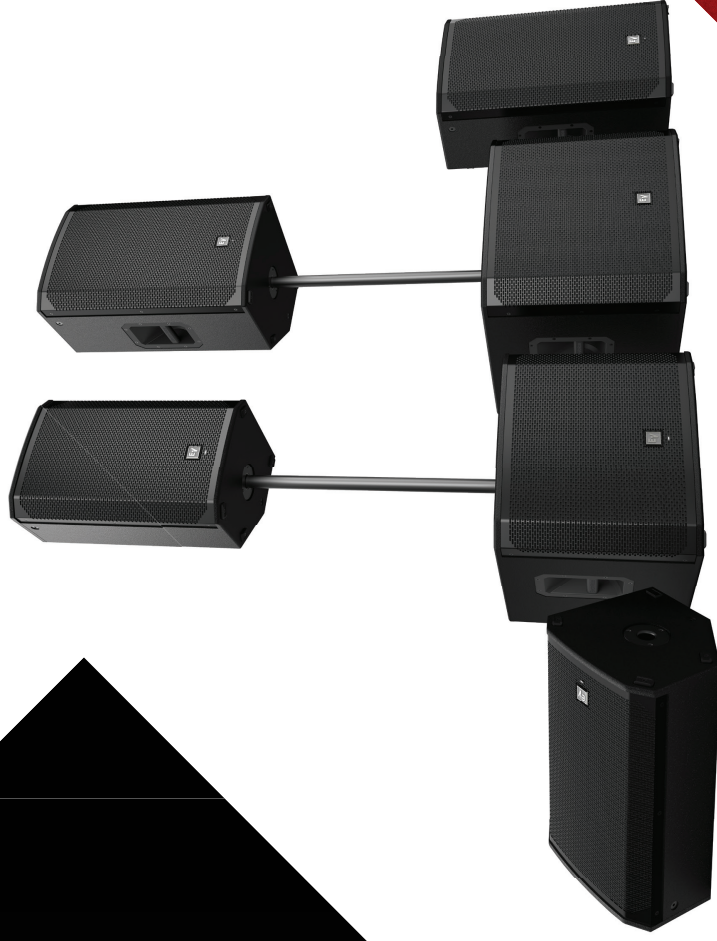


Or control your loudspeaker and subwoofer levels individually

EKX

MAXIMUM SONIC IMPACT. MINIMUM EFFORT.

ELECTROVOICE.COM/EKX



**QUICKSMART DSP
PLUS FOR BEST-
IN-CLASS VISUAL
CONTROL AND
MONITORING**

EKX Powered Loudspeakers

EV engineering and innovation working together for maximum sonic impact.

- **QuickSmart DSP** features best-in-class processing, EV's signature single-knob user interface, and intuitive menu navigation via LCD. Easy setup via four presets (Music, Live, Speech*, Club), sub/top system-match crossovers, three-band EQ*, five user-programmable presets (Store and Recall settings), visual monitoring of limiter status, input level control* and meters, and master volume control to ensure optimal gain structure (* full-range models only). EV-exclusive Cardiod Control Technology feature for subwoofers allows output to be steered towards the audience with up to 35 dB reduction on stage when multiple subs are deployed (powered models only).
- **High-efficiency Class-D power amplifiers** (up to 1500 W) deliver up to 134 dB peak SPL via high-sensitivity transducers designed and engineered by EV (powered models only).
- **Intelligent thermal management** with a variable-speed fan controlled by multiple onboard sensors, ensuring superior performance and reliability in demanding environmental conditions (powered models only).
- **EV-patented Signal Synchronized Transducers (SST) waveguide design** on full-range models provides precise and consistent coverage.
- **Ideal for portable and installed applications.** Lightweight, compact 150 mm wood enclosures with internal bracing, durable EVCoat finish, eight M10 threaded mounting points (full-range models), aluminum pole-mounts, and all-metal handles. Subs feature large slot ports for low distortion and excellent bass extension, and are equipped with a metal grille reinforcement bar.

Designed to offer superior all-around performance to other models currently available in its category, the EKX series includes eight models (four powered and four passive), including 12" and 15" two-way models and 15" and 18" subwoofers. EV-engineered components — including next-generation transducers, Signal Synchronized Transducers (SST) waveguide design, and high-efficiency Class-D amplifiers coupled with single-knob QuickSmart DSP control with LCD — all work together to provide you with exceptional sound quality and precise coverage at high SPLs. EV's award-winning industrial design — with robust wood enclosures and durable EVCoat finish — ensures that EKX speakers look as great as they sound.





EKK-12P
12" TWO-WAY POWERED LOUDSPEAKER

QuickSmart DSP features best-in-class processing, EV's signature single-knob user interface, and intuitive menu navigation via LCD.

High-efficiency, 1500 W Class-D power amplifier delivers up to 132 dB peak SPL on the EKK-12P and up to 134 dB peak SPL on the EKK-15P via high-sensitivity transducers designed and engineered by EV.

Intelligent thermal management with a variable-speed fan controlled by multiple onboard sensors, ensuring superior performance and reliability in demanding environmental conditions.

EV-patented Signal Synchronized Transducers (SST) waveguide design provides precise and consistent coverage.

Lightweight, compact 15-mm wood enclosure with internal bracing, durable EVCcoat finish, eight M10 threaded mounting points, aluminum pole mounts, and all-metal handles.

60 Hz – 18 kHz frequency range (-3 dB);
132 dB peak SPL

90° x 60° coverage

41.4 lbs | 18.8 kg

24" x 15" x 14"

607mm x 375mm x 356mm
(H x W x D)



EKK-15P
15" TWO-WAY POWERED LOUDSPEAKER

QuickSmart DSP features best-in-class processing, EV's signature single-knob user interface, and intuitive menu navigation via LCD.

High-efficiency, 1500 W Class-D power amplifier delivers up to 132 dB peak SPL on the EKK-12P and up to 134 dB peak SPL on the EKK-15P via high-sensitivity transducers designed and engineered by EV.

Intelligent thermal management with a variable-speed fan controlled by multiple onboard sensors, ensuring superior performance and reliability in demanding environmental conditions.

EV-patented Signal Synchronized Transducers (SST) waveguide design provides precise and consistent coverage.

Lightweight, compact 15-mm wood enclosure with internal bracing, durable EVCcoat finish, eight M10 threaded mounting points, aluminum pole mounts, and all-metal handles.

55 Hz – 18 kHz frequency range (-3 dB);
134 dB peak SPL

90° x 60° coverage

53.9 lbs | 24.4 kg

27" x 17" x 17"

685mm x 432mm x 429mm
(H x W x D)



EKK-15SP
15" POWERED SUBWOOFER

QuickSmart DSP features best-in-class processing, EV's signature single-knob user interface, and intuitive menu navigation via LCD.

Cardioid Control Technology allows output to be steered towards the audience with up to 35 dB reduction on stage when multiple subs are deployed.

High-efficiency, 1300 W Class-D power amplifier delivers up to 133 dB peak SPL on the EKK-15SP and up to 134 dB peak SPL on the EKK-18SP utilizing high-sensitivity transducers designed and engineered by EV.

Intelligent thermal management with a variable-speed fan controlled by multiple onboard sensors, ensuring superior performance and reliability in demanding environmental conditions.

Two XLR outputs for easy system expansion to additional loudspeakers or subwoofers. Large slot ports for low distortion and excellent bass extension. Metal grille reinforcement bar (one on EKK-15SP, two on the 18SP). M20 threaded pole mount plate.

45 Hz – 150 Hz frequency range (-3 dB);
133 dB peak SPL

57.7 lbs | 26.2 kg

18" x 21" x 22"

455mm x 530mm x 551mm
(H x W x D)



EKK-18SP
18" POWERED SUBWOOFER

QuickSmart DSP features best-in-class processing, EV's signature single-knob user interface, and intuitive menu navigation via LCD.

Cardioid Control Technology allows output to be steered towards the audience with up to 35 dB reduction on stage when multiple subs are deployed.

High-efficiency, 1300 W Class-D power amplifier delivers up to 133 dB peak SPL on the EKK-15SP and up to 134 dB peak SPL on the EKK-18SP utilizing high-sensitivity transducers designed and engineered by EV.

Intelligent thermal management with a variable-speed fan controlled by multiple onboard sensors, ensuring superior performance and reliability in demanding environmental conditions.

Two XLR outputs for easy system expansion to additional loudspeakers or subwoofers. Large slot ports for low distortion and excellent bass extension. Metal grille reinforcement bar (one on EKK-15SP, two on the 18SP). M20 threaded pole mount plate.

40 Hz – 160 Hz frequency range (-3 dB);
134 dB peak SPL

72.4 lbs | 32.8 kg

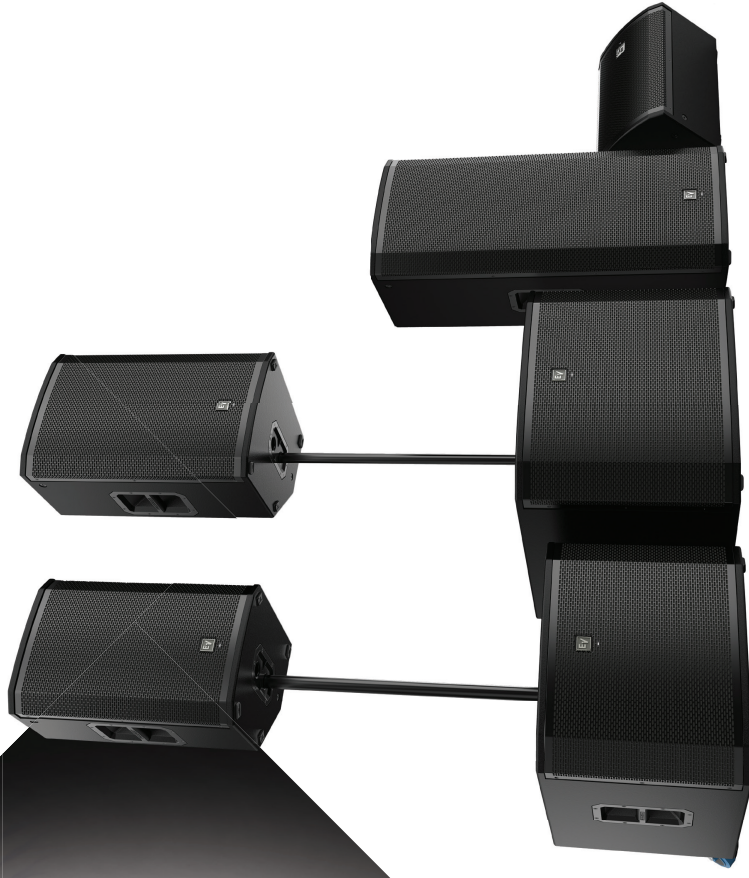
20" x 24" x 24"

520mm x 606mm x 612mm
(H x W x D)

ETX

THE FULLY LOADED FLAGSHIP.

ELECTROVOICE.COM/ETX



ETX Powered Loudspeakers

Performance beyond the reach of the competition.

- **State-of-the-art components** deliver breathtaking sonic power and clarity and maximum reliability: 1800 W (subs) & 2000 W (full-range) Class-D power amplifiers with integrated DSP produce high SPLs utilizing high-sensitivity, low-distortion transducers (including DVX & SMX series woofers and precision DH3-B HF titanium compression drivers).
- **Lightweight, ergonomic, durable, and compact** 18-mm, 13-ply birch plywood enclosures finished with EVCoat. Eight mounting points for permanent installations (full-range models). Custom die-cast aluminum pole cups, handles and hardware.
- **EV's FIR-Drive** utilizes the latest Finite Impulse Response (FIR) filter technology to optimize transducer linearity. Advanced limiter algorithms provide independent peak and thermal transducer protection.
- **Complete full-function QuickSmart DSP** control via a single-knob interface. LCD screen for easy system set-up and monitoring; location/application EQ presets (eg. tripod, mounted, suspended, live, music, speech), limiter status, delay settings, input level controls/meters and master volume control to ensure optimal gain structure. Parametric EQ allows for more precise configuration. EV-exclusive Cardiod Control Technology feature for subwoofers allows output to be steered towards the audience with up to 35 dB reduction on stage when multiple subs are deployed.
- **EV-patented Signal Synchronized Transducers (SST) waveguide** design provides precise and consistent coverage across all system configurations. Waveguides are custom-designed and optimized per model.

**QUICKSMART DSP
PRO MAKES IT EASY
TO OPTIMIZE YOUR
ETX SYSTEM FOR ANY
APPLICATION**

ETX Powered Loudspeakers are the top-of-the-line members of the EV portable sound family. They are engineered from the ground up to be the highest-specification products in their class, designed to deliver an uncompromising combination of advanced audio performance and all-around versatility.

Six models are available (10", 12", 15" 2-way; 15" 3-way; 15" & 18" sub), each fully equipped for equally spectacular results across a wide range of applications. They are ideal for pro musicians, DJs, mobile entertainers, and rental companies looking for high-end compact sound reinforcement, and will ensure concert quality finesse in small-to-medium permanent installations. Each model provides sound quality, power, and features beyond the reach of other similarly sized professional grade powered speakers — tour-quality sound in a tidy, easy-to-use package.

Developed using the latest engineering software, industrial design, and manufacturing processes, the series brings real innovation to multi-purpose loudspeaker design, all backed up by over 90 years of unmatched pro-audio know-how: EV-engineered high-efficiency transducers, high-powered Class-D amplifiers, Signal Synchronized Transducers (SST) waveguide design, powerful and intuitive QuickSmart DSP, and multiple on-board performance optimization and protection features — all packaged in low-profile tour-grade wood enclosures, all working together to provide peerless EV sound quality and precise coverage at the highest SPLs.





ETX-10P
10" TWO-WAY POWERED LOUDSPEAKER

10" LF SMX woofer
1.25" HF titanium compression driver
2000 W Class-D power amplifier with integrated FIR-Drive DSP
85 Hz – 20 kHz frequency range (-3 dB); 134 dB peak SPL
90° x 60° coverage
44.8 lbs 20.3 kg
21" x 13" x 14"
526mm x 330mm x 366mm (H x W x D)



ETX-12P
12" TWO-WAY POWERED LOUDSPEAKER

12" LF SMX woofer
1.25" HF titanium compression driver
2000 W Class-D power amplifier with integrated FIR-Drive DSP
55 Hz – 20 kHz frequency range (-3 dB); 135 dB peak SPL
90° x 60° coverage
52 lbs 23.6 kg
24" x 15" x 16"
613mm x 381mm x 400mm (H x W x D)



ETX-15P
15" TWO-WAY POWERED LOUDSPEAKER

15" LF SMX woofer
1.25" HF titanium compression driver
2000 W Class-D power amplifier with integrated FIR-Drive DSP
48 Hz – 20 kHz frequency range (-3 dB); 135 dB peak SPL
90° x 60° coverage
61.1 lbs 27.7 kg
27" x 17" x 18"
691mm x 431mm x 447mm (H x W x D)



ETX-35P
15" THREE-WAY POWERED LOUDSPEAKER

15" LF SMX woofer
6.5" MF driver
1.25" HF titanium compression driver
2000 W Class-D power amplifier with integrated FIR-Drive DSP
48 Hz – 20 kHz frequency range (-3 dB); 136 dB peak SPL
60° x 40° coverage
84.2 lbs 38.2 kg
40" x 18" x 17"
1023mm x 469mm x 426mm (H x W x D)



ETX-15SP
15" POWERED SUBWOOFER

15" DVX woofer for maximum punch
1800 W Class-D power amplifier with integrated FIR-Drive DSP
37 Hz – 150 Hz frequency range (-3dB); 134 dB peak SPL
Special DSP preset for true cardioid performance across the full operating bandwidth
Combo pole cup (insert and threaded) for use with full-range models
Removable casters
91.9 lbs 41.7 kg
With Casters: 19" x 23" x 32"
471mm x 576mm x 825mm (H x W x D)
Without Casters: 19" x 23" x 27"
471mm x 576mm x 692mm (H x W x D)



ETX-18SP
18" POWERED SUBWOOFER

18" DVX woofer for extended low-frequency response
1800 W Class-D power amplifier with integrated FIR-Drive DSP
33 Hz – 150 Hz frequency range (-3 dB); 135 dB peak SPL
Special DSP preset for true cardioid performance across the full operating bandwidth
Combo pole cup (insert and threaded) for use with full-range models
Removable casters
114.2 lbs 51.8 kg
With Casters: 22" x 27" x 36"
550mm x 675mm x 910mm (H x W x D)
Without Casters: 22" x 27" x 31"
550mm x 675mm x 777mm (H x W x D)