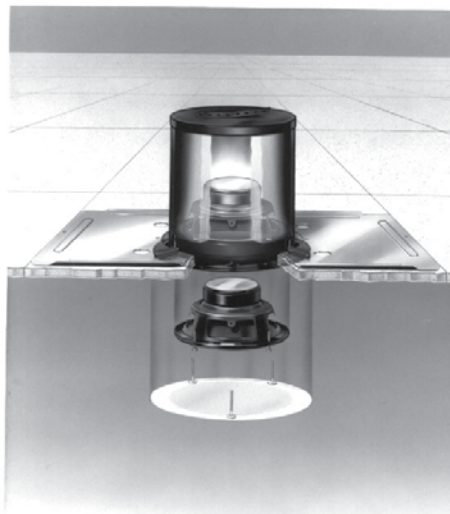




# Strategy Series™ 4" Mounting System Accessories

Enclosures, Grilles, Tile Bridge, Plaster and Trim Rings



*Strategy Series*



**FA95-4**



**FA97-4**

## Applications

The patented Strategy Series (U.S. Patent #5206464) loudspeaker system was carefully engineered to provide excellent audio performance as well as optimum aesthetic and installation advantages in new or existing construction. The innovative system, which uses matched audio components, includes loudspeakers, acoustic enclosures, hardware-free grilles, trim rings, plaster rings, and tile bridges.

Strategy Series components may be mixed and matched to provide an attractive, high-quality and economical solution for meeting the music and voice-communication needs of owners, architects, contractors and consultants. The wide dispersion of the 4" series loudspeakers makes the system ideal for low-ceiling applications since fewer loudspeakers are required to achieve proper coverage with desired sound levels. The series offers two performance levels: standard and high-performance. Respective levels are determined by selected loudspeaker/enclosure combination.

The 4" system is perfect for commercial, institutional and retail venues where high-fidelity music and/or clear voice communication are required. Easier, faster installation and a superior overall appearance are the three most distinguishable characteristics of the Strategy Series.

## Acoustic Enclosures - FA97-4 Series and FA95-4 Series

Strategy Series 4" loudspeaker enclosures are acoustically-treated, front-loading units, equipped for installation in ceilings up to 2 3/8" thick. Models FA97-4 and FA95-4 feature depths of 7 3/8" and 6 1/8", respectively. The deeper, FA97-4 allows for extended low-frequency response and is also lined with sound-deadening, 5/16" thick acoustic batting (2 lb./ft<sup>3</sup> density) and features an acoustic fiber board bottom to prevent "oil canning". Both styles are equipped with conduit knockouts and are available without knockouts (NK) to meet respective building code requirements. Enclosures are constructed of CRS (22-gauge top ring & 20-gauge bottom/sides), painted and include four threaded inserts for loudspeaker installation and three stud receptacles for accepting Strategy Series grilles. Both models are electro galvanized.

Model FA97-4 and FA95-4 install quickly and easily in plaster, drywall, or suspended tile ceilings up to 2 3/8" thick utilizing three, easy-to-adjust rotating clamps that rotate and secure into position with a screwdriver. The enclosures front-load Atlas Sound's 4" diameter Strategy Series loudspeaker Model FA134T87. This direct loudspeaker-to-enclosure mounting method removes all load-bearing requirements from the grille, allowing the use of welded studs for convenient, push-on grille installation — a time-saving feature which presents a clean and hardware-free appearance. It also facilitates fast and easy grille removal for painting or other maintenance.

FA97-4 Enclosures allow the high-performance coaxial FA134T87 to achieve maximum potential. This high-quality loudspeaker/enclosure combination is perfect for applications where high-fidelity music and intelligible speech are imperative.

FA95-4 Models are economical system enclosures with less depth than FA97-4 models. They are suited for installations requiring quality voice transmission, music and signal reproduction in commercial, industrial and institutional applications.

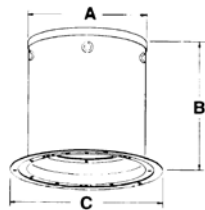
©2011 Atlas Sound L.P. All rights reserved. Atlas Sound and Strategy Series are trademarks of Atlas Sound L.P. All other trademarks are the property of their respective owners. ATS003027 RevC 2/12

©2011 Atlas Sound L.P. All rights reserved. Atlas Sound and Strategy Series are trademarks of Atlas Sound L.P. All other trademarks are the property of their respective owners. AT5003027 RevC 2/12

## Specifications

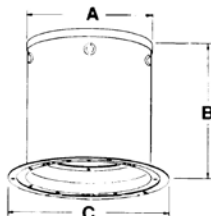
### FA97-4(NK)\*

A	5 <sup>7</sup> / <sub>16</sub> " (138mm)
B	7 <sup>7</sup> / <sub>8</sub> " (194mm)
C	7 <sup>1</sup> / <sub>16</sub> " (17.5mm)
Cutout Diameter	6 <sup>1</sup> / <sub>2</sub> " (165mm)
Rec. Speaker*	FA134T87
Weight	2.0 lbs. /.9 kg.
Int. Volume	.10ft <sup>3</sup>



### FA95-4

A	5 <sup>7</sup> / <sub>16</sub> " (138mm)
B	6 <sup>1</sup> / <sub>8</sub> " (155.6mm)
C	7 <sup>1</sup> / <sub>16</sub> " (17.5mm)
Cutout Diameter	6 <sup>1</sup> / <sub>2</sub> " (165mm)
Rec. Speaker*	FA134T87
Weight	1.75 lbs. /.8 kg.
Int. Volume	.8ft <sup>3</sup>



\*(NK)= Models Without Knockouts

## Mounting Accessories

### Plaster Ring - Model FAPR-4

Model FAPR-4 plaster ring is used to mount Strategy Series 4" loudspeakers into ceilings and walls for applications where an enclosure cannot be used, or where it is not desired. Unit is constructed with the same internal mounting flange as FA97-4 and FA95-4 enclosures. It may be used to mount non-transformer equipped loudspeaker models into walls having a min. depth of 2<sup>7</sup>/<sub>16</sub>". The FAPR-4 will facilitate installation of transformer-equipped loudspeaker models into walls with a minimum depth of 4<sup>3</sup>/<sub>8</sub>" \*. Plaster ring is constructed of 20-gauge CRS and finished in textured black epoxy. It is equipped with four threaded inserts for loudspeaker installation and three stud receptacles for mounting Strategy Series grilles. The mounting mechanism is comprised of three rotating clamps (included).

### FAPR-4

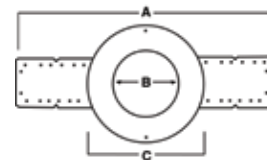
A	5 <sup>5</sup> / <sub>8</sub> " (137mm)
B	7 <sup>9</sup> / <sub>16</sub> " (192mm)
C	7 <sup>5</sup> / <sub>8</sub> " (22mm)
Cutout Diameter	6 <sup>1</sup> / <sub>2</sub> " (165mm)
Weight	5 lbs. /227kg.

## Trim Ring - Model FA-TR4

The Strategy Series FA-TR4 trim ring/rough-in bracket, for wall or ceiling-mount applications, installs prior to the drywall and serves as a pattern cut-out for the drywall contractor to finish-out the wall leaving the proper opening for a FA97-4 or FA95-4 enclosure and also a FAPR-4 Plaster Ring. This step identifies pre-wire location, expediting sound system installation. Trim ring measures 25<sup>5</sup>/<sub>8</sub>"L and will accommodate 3<sup>5</sup>/<sub>8</sub>" to 1<sup>1</sup>/<sub>4</sub>" drywall. Mounting holes are provided to match both 16" and 24" center studs. FA-TR4 is finished in black epoxy.

### FA-TR4

A	25 <sup>5</sup> / <sub>8</sub> " (651mm)
B	6 <sup>5</sup> / <sub>8</sub> " (168mm)
C	11 <sup>1</sup> / <sub>4</sub> " (285mm)
Weight	1.5 lbs. /.7kg.

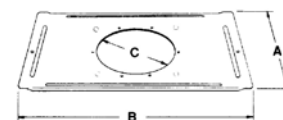


## Tile Bridge - Model FA81-4

The Strategy Series™ tile bridge for 4" loudspeakers is designed to prevent ceiling tile sag by distributing the loudspeaker assembly weight to the ceiling's support members. Model FA81-4 accepts enclosure Model Series FA95-4 and FA97-4, Plaster Ring Model FAPR-4 and is constructed of 24-gauge electro-galvanized steel.

### FA81-4

A	14 <sup>1</sup> / <sub>8</sub> " (359mm)
B	23 <sup>3</sup> / <sub>8</sub> " (600mm)
C	6 <sup>1</sup> / <sub>2</sub> " (165mm)
Weight	2.38 lbs. /1.1 kg.



©2011 Atlas Sound L.P. All rights reserved. Atlas Sound and Strategy Series are trademarks of Atlas Sound L.P. All other trademarks are the property of their respective owners. ATS003027 RevC 2/12

## Attractive, Easy-Fit Grilles

FA51-4, FA170-4, FA720-4, and FA730-4

Strategy Series grilles push mount for fast and easy installation without tools. They are also aesthetically pleasing both in size and overall appearance. This unique grille design utilizes three specially configured, serrated, welded studs for secure, push-on installation, achieving a clean, hardware-free appearance. The grilles are available in a choice of three round styles and one square version to meet all types of interior decor and budget considerations. All models are constructed of CRS and finished in textured white epoxy or a combination of textured white and black enamel. Each of these grilles were designed to be use with the FA97-4, FA95-4 enclosures and the FAPR-4 Plaster Ring only.

The functional and economic FA51-4 round grille features a one-piece, stamped, perforated opening which is compatible with most ceiling styles. The grille's 1/8" diameter holes are equally spaced, forming a perforation pattern which allows for high-quality sound transmission.

Square Model FA170-4 features an integrally designed subplate with slotted cutouts enabling the grille to be positioned for directional ceiling requirements. This exclusive feature allows for independent grille rotation regardless of mounted back box position. The three push-mount grille studs are sandwiched in between the grille and subplate, allowing the studs to rotate within the slotted cutouts as the grille is turned.

Aesthetic value highlights the round Strategy FA720-4 grille. The unit's sturdy, two piece construction features a perforated, mesh grille, welded to a formed outer ring. The grille's perforated design and narrow ring width enable it to embrace selective applications, while providing optimum speaker performance.

The unique and contemporary design of the FA730-4 grille compliments any surrounding decor and offers excellent voice/music transmission through standard perforation design. The grille features a textured white trim ring, accented by black regressed step-rings and black finished perforation. When installed, the grille gives the appearance of a recessed spot or down light.

### FA51-4

**Grille Dimensions** 8 5/8" Diameter x 1/4" Projection (216mm x 5.8mm)

**Speaker** FA134T87

**Enclosure** FA97-4, FA95-4

**Mtg.Ring** FAPR-4

### FA170-4

**Grille Dimensions** 9 3/4" Square x 5/16" Projection (248mm x 8mm)

**Speaker** FA134T87

**Enclosure** FA97-4, FA95-4

**Mtg.Ring** FAPR-4

### FA720-4

**Grille Dimensions** 7 7/8" Diameter x 5/16" Projection (200mm x 8mm)

**Speaker** FA134T87

**Enclosure** FA97-4, FA95-4

**Mtg.Ring** FAPR-4

### FA730-4

**Grille Dimensions** 7 7/8" Diameter x 3/8" Projection (200 x 9.5mm)

**Speaker** FA134T87

**Enclosure** FA97-4, FA95-4

**Mtg.Ring** FAPR-4



★ General signaling (1480 non-fire) includes all speaker/transformer combinations (except models with HT-82) when used with a UL listed enclosure and baffle.



FA51-4



FA170-4



FA720-4



FA730-4

## Architect and Engineer Specifications

Loudspeaker system shall be Atlas Sound Strategy Series™. System shall be UL listed and include a coaxial, 4" loudspeaker Model FA134, matched enclosure Model \_\_\_\_ (FA97-4, FA97-4NK) and flush grille Model \_\_\_\_ (FA51-4, FA720-4, FA730-4). Strategy Series loudspeaker, enclosures and grilles shall be listed by Underwriters Laboratories (UL 1480 General Signaling) to U.S. and Canadian safety standards. Nominal frequency response of the system shall be 110 Hz to 20 kHz and the sensitivity shall be 92dB (peak) measured at 1W / 1M across the full bandwidth. Power rating shall be 25 watts. Unit shall be comprised of a 4" diameter low frequency driver and a ½" high frequency driver. Magnet shall be a 10 oz. and the voice coil diameter shall be 1" (25mm). Dispersion shall be 130° measured in the enclosure at -6dB, 2kHz octave band. Transformer-equipped models shall include factory wired \_\_\_\_ (70.7) volt transformer with primary taps of \_\_\_\_ (.5, 1, 2 & 4 or 1, 2, 4, and 8). Loudspeaker shall front-load to specified enclosure model FA97-4(NK) or Model FAPR-4 plaster rings. Strategy Series® enclosures shall use clamping dogs for ceiling mounting and stud receivers for grille mounting. The FA97 enclosure models shall be lined with high density acoustic batting.